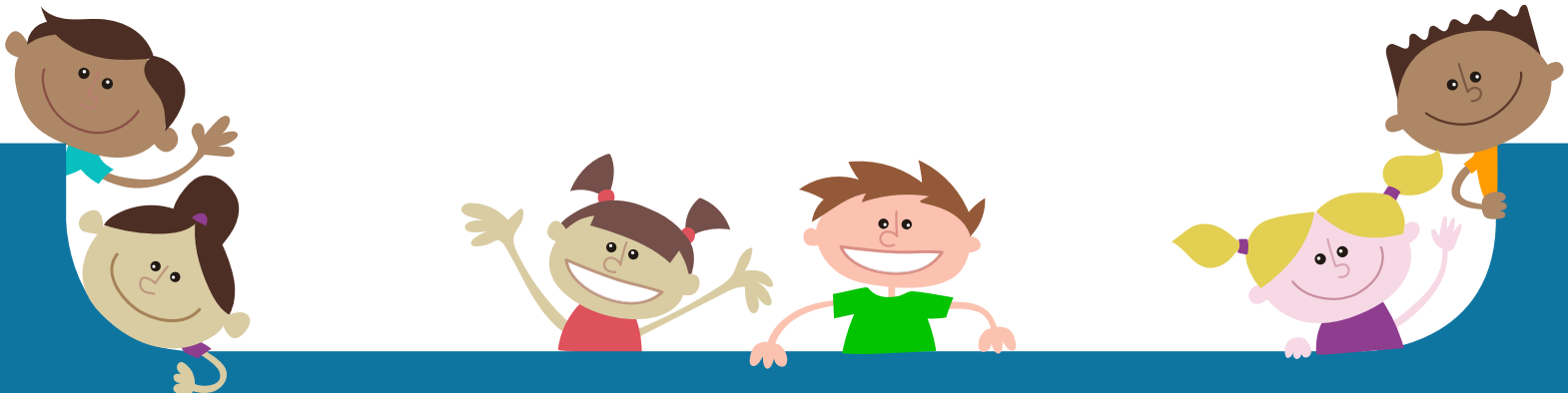


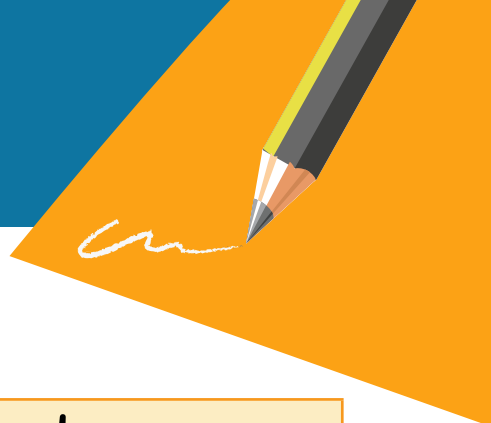
# Phonemic Awareness

## Upper Elementary

### Directions:

1. Explain to students that inflections are a change in the form of a word, usually at the end, that is used to change the tense, mood, person, number, case, or gender. This often leads to a spelling change in the root word.
2. Cut out the word cards and put them into a stack.
3. Cut out the inflection cards and put them into a stack.
4. Taking turns between piles, the student should take the top card from each pile and say the inflection and word. For example, modify (word card) and ed (inflection card).
5. The student should then take two cards and combine the word using the recording sheet. For example, modify + ed = modified. (You can also use a dry erase board to write the words if desired). If the word card and the inflection card do not create a word you may draw again.
6. Take turns drawing cards and making new words until the pile has run out.





## Word Cards

happy	proof	decay
leaf	trim	stun
demolish	describe	experience
admire	friend	close
admit	fly	experiment
touch	leaf	colony
qualify	calf	publish
dismiss	beach	try
buy	cry	heavy
trespass	fret	hitch

## Inflection Cards

s or es	s or es	s or es
s or es	ed	ed
ed	ed	ed
er	er	er
er	ing	ing
ing	ing	est
est	est	est

